

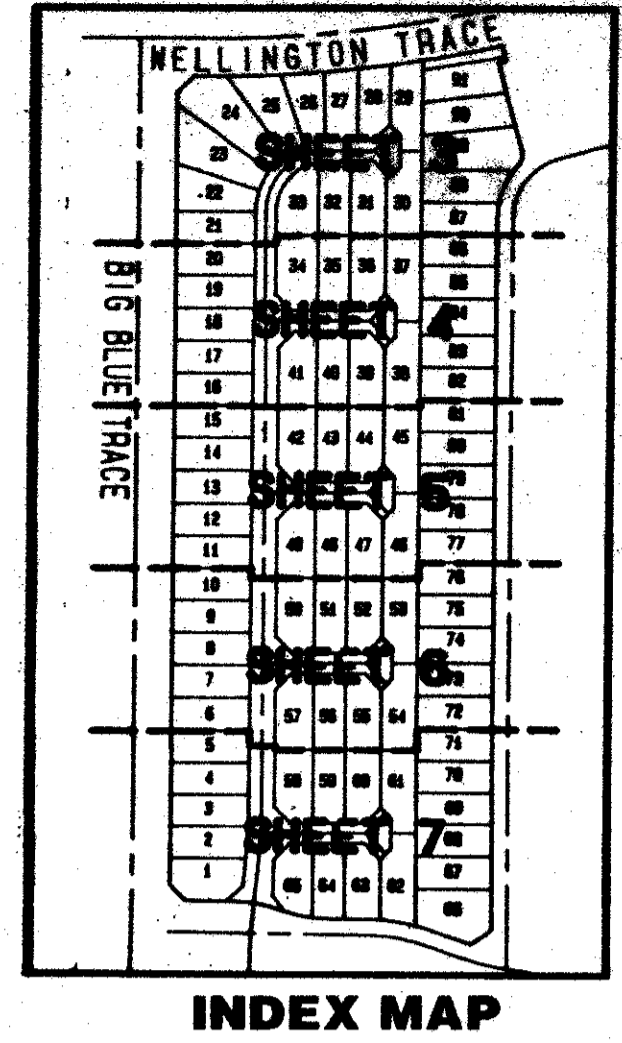
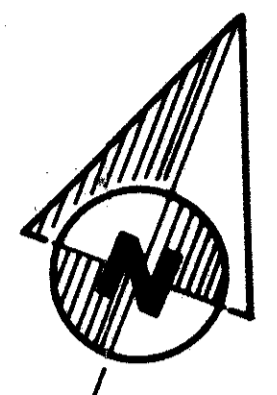
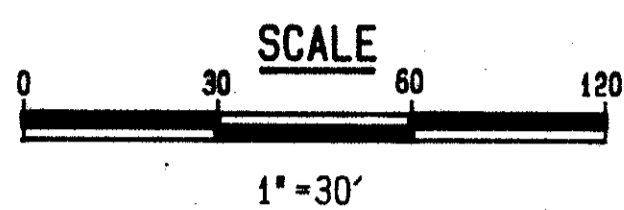
EMERALD FOREST PLAT NO. 2

OF WELLINGTON - P. U. D. *T. 42N*

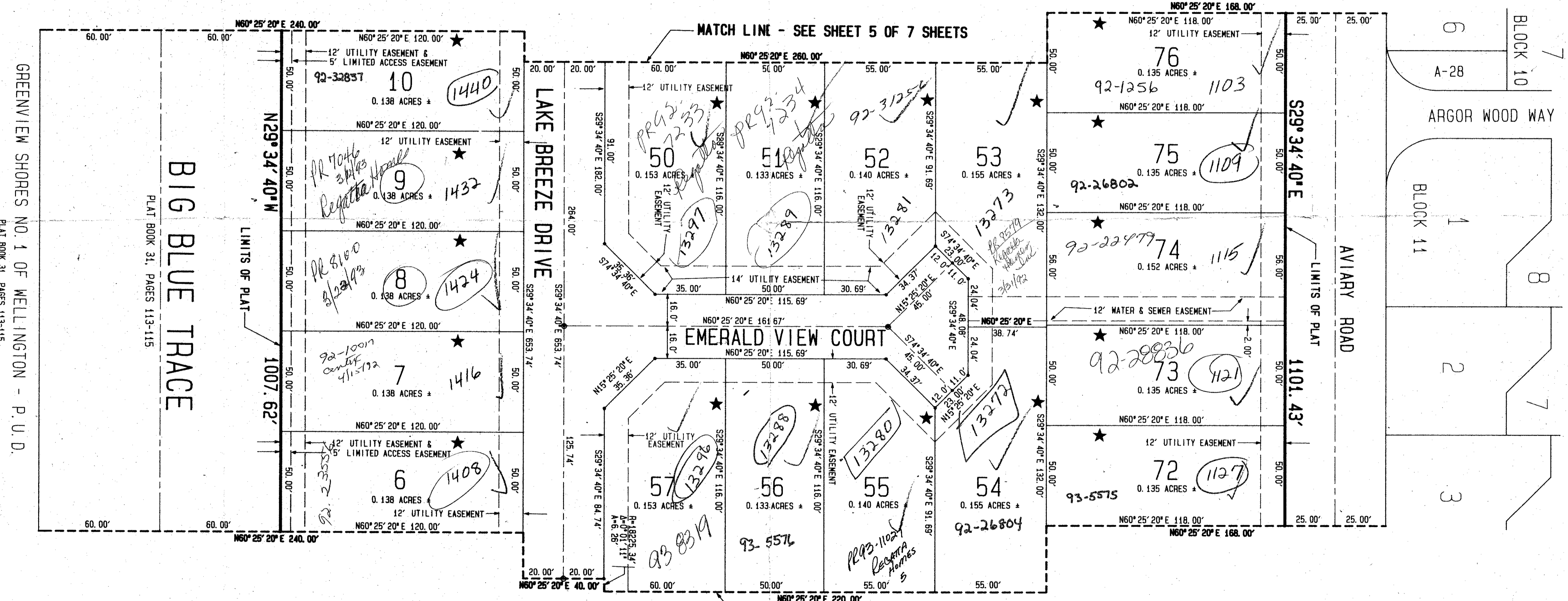
BEING A REPLAT OF PART OF EMERALD FOREST OF WELLINGTON - P. U. D. AS RECORDED IN PLAT BOOK 56, PAGES 177-181, INCLUSIVE, PUBLIC RECORDS OF PALM BEACH COUNTY, FLORIDA AND OTHER LANDS.

LYING IN PART OF SECTIONS 4 AND 9 TOWNSHIP 44 SOUTH, RANGE 41 EAST PALM BEACH COUNTY, FLORIDA

SHEET 6 OF 7 SHEETS
JANUARY 1991



- LEGEND**
- BLK. = BLOCK
 - R/W = RIGHT-OF-WAY
 - P.C. = POINT OF CURVATURE
 - P.B.C. = PALM BEACH COUNTY
 - NO. = NUMBER
 - P.U.D. = PLANNED UNIT DEVELOPMENT
 - + = MORE OR LESS
 - A = ARC LENGTH
 - Δ = CENTRAL ANGLE
 - R = RADIUS
 - C.L. = CENTERLINE
 - D.U. = DWELLING UNIT
 - P.L.S. = PROFESSIONAL LAND SURVEYOR
 - P.C.P. = PERMANENT CONTROL POINT
 - P.R.M. = PERMANENT REFERENCE MONUMENT
 - P.O.B. = POINT OF BEGINNING
 - ★ = ZERO LOT LINE



GREENVIEW SHORES NO. 1 OF WELLINGTON - P. U. D.
PLAT BOOK 31, PAGES 113-115.

BIG BLUE TRACE
PLAT BOOK 31, PAGES 113-115

EMERALD FOREST OF WELLINGTON - P. U. D.
PLAT BOOK 56, PAGES 177-181

EXISTING EASEMENTS PER THE PARENT PLAT OF EMERALD FOREST OF WELLINGTON - P. U. D. HAVE BEEN ABANDONED IN OFFICIAL RECORD BOOK 6712, PAGES 1961 THROUGH 1964, INCLUSIVE, OF THE PUBLIC RECORDS OF PALM BEACH COUNTY, FLORIDA.

SUBDIVISION # EMERALD
PAGE 52
BOOK 68
FLOOR ZONE 8
BLOCK 77
LOT CODE 33414
PLAT NO. 51
WELLINGTON

TAZ 727

68/52

0332-096

EMERALD FOREST #2

Dailey-Fotony, inc.
land surveyors, planners, engineers
5050 10th Avenue North, Suite B - Lake Worth, Florida 33463-2602
Phone 407/965-8787